

## FEATURES

- Adjustable ranges
- Bellow & Piston operated
- Over-pressure up to 600 bar

## APPLICATION

- Over-pressure protection for gauges, switches & transmitters

### Bellow / Piston

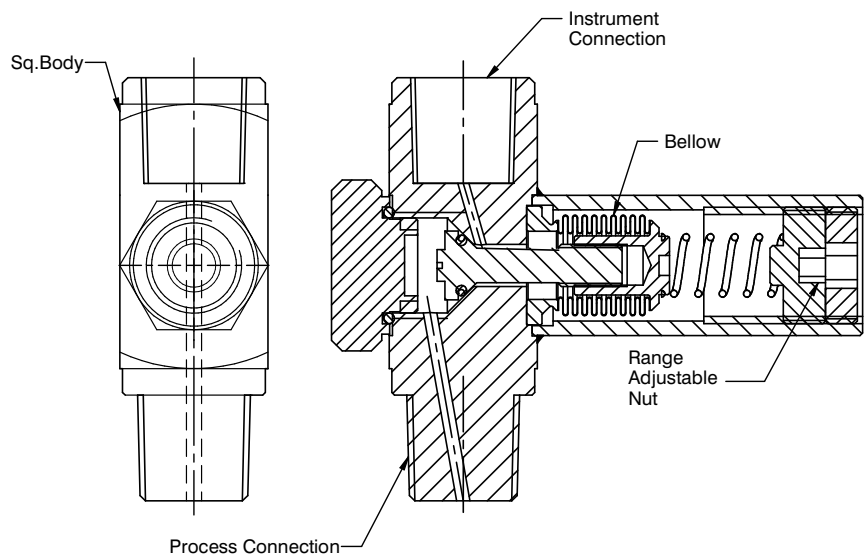


### STANDARD SPECIFICATIONS

Type	: Pattern 3 (6... 16 bar)
Material	: AISI 316 SS
Instrument connection	: 1/2" NPT (F)
Process connection	: 1/2" NPT (M)
Gaskets / Seals	: Viton
Maximum working pressure	: 600 bar
Operating temperature	: 180°C

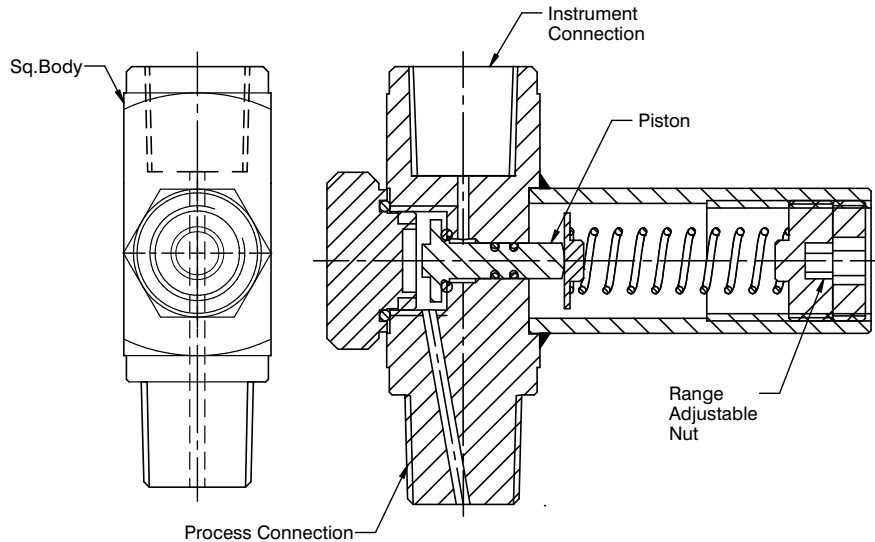
### DIMENSIONAL DRAWING

#### Pattern 1, 2



**DIMENSIONAL DRAWING**

**Pattern 3, 4, 5, 6, 7**



**ORDERING CODES**

**1. TYPE**

- 1** Pattern 1 (200 mbar...1.6 bar)
- 2** Pattern 2 (2.5...4 bar)<sup>2</sup>
- 3** Pattern 3 (6...16 bar)
- 4** Pattern 4 (10...40 bar)
- 5** Pattern 5 (30...80 bar)
- 6** Pattern 6 (60...160 bar)
- 7** Pattern 7 (100...400 bar)

**3**

**4. PROCESS CONNECTION**

- 12B** 1/4" BSP (M)
- 13B** 3/8" BSP (M)
- 14B** 1/2" BSP (M)
- 12N** 1/4" NPT (M)
- 13N** 3/8" NPT (M)
- 14N** 1/2" NPT (M)
- 14M** M20x1.5 mm (M)

**14N**

**2. MATERIAL**

- MF** AISI 316 SS
- MG** AISI 316L SS
- MM** Monel 400<sup>5</sup>
- MO** Hastelloy C-276<sup>5</sup>

**MF**

**5. OTHER OPTIONS**

- TC** Material test certificate 3.1
- TM** Material test certificate 2.2
- TN** Tested to NACE standards
- TO** Certification for Oxygen service
- XM** Marking by engraving
- XL** Marking by laser

**XM**

**3. INSTRUMENT CONNECTION**

- 02B** 1/4" BSP (F)
- 03B** 3/8" BSP (F)
- 04B** 1/2" BSP (F)
- 02N** 1/4" NPT (F)
- 03N** 3/8" NPT (F)
- 04N** 1/2" NPT (F)
- 04M** M20x1.5 mm (F)

**04N**

**Ordering Example : A202-3-MF-04N-14N-XM**

**NOTES:**

1. Other process connections are available through adaptors.
2. Available in piston type, contact factory for further details.
3. As standard set point should be mentioned while ordering or the factory set point shall be 110% of order range.
4. Set point error shall be ±10% of set point value in general.
5. Applicable for wetted parts only. Non-wetted parts shall be AISI 316 SS.