

FEATURES

- Dual flushing ports
- Flanged & in-line seal designs
- Optional exotic materials
- Up to 600# rating

APPLICATION

- Flushing crystalized media
- Cleaning of diaphragms

Detachable / Integrated Designs

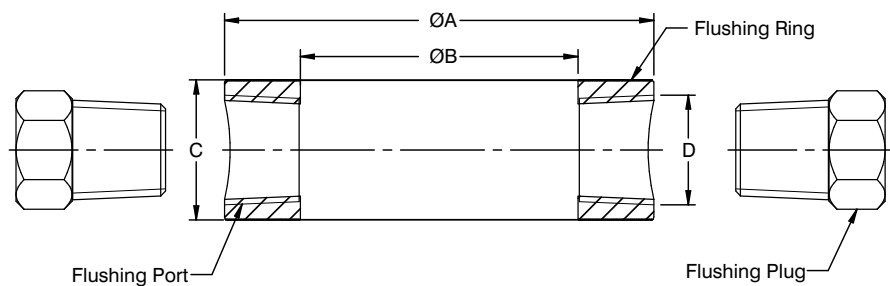


STANDARD SPECIFICATIONS

Flange Size	:	1½"
Material	:	AISI 316 SS
Flange facing	:	Raised face
Flushing port	:	½"NPT (F), plugged
Maximum working pressure	:	As per flange rating
Maximum working temperature	:	300°C

DIMENSIONAL DRAWING

Pattern 1



Flange Size	Class	A	B	C	D
½"	150 # to 600 #	35	20	30	¼" NPT or ½" NPT
¾"	150 # to 600 #	43	26	30	
1"	150 # to 600 #	51	32.5	30	
1½"	150 # to 600 #	73	47.5	30	
2"	150 # to 600 #	92	59.5	30	
2½"	150 # to 600 #	105	72.5	30	
3"	150 # to 600 #	127	88	30	

All dimensions are in mm

ORDERING CODES

1. FLANGE SIZE / SEAL TYPE

50	1/2"
75	3/4"
01	1"
15	1 1/2"
02	2"
25	2 1/2"
03	3"
04	4"
05	5"
S01	For D101 (-1...70 bar)
S02	For D101 (100...400 bar)
S06	For D102 (-1...70 bar)
S07	For D102 (-1...70 bar)
S21	For D201 (-1...70 bar)
S22	For D201 (100...400 bar)
S23	For D201 (-1...70 bar)

15

2. MATERIAL

MB	ASTM A105 / Carbon Steel
MF	AISI 316 SS
MG	AISI 316L SS
MM	Monel
MO	Hastelloy C-276
M1	PVC
M2	PTFE (Teflon)
M4	PP

MF

3. FLANGE FACING

R	Raised Face
J	Ring-Type Joint
F	Flat Face

R

4. FLUSING PORT SIZE

02N	1/4" NPT (F)
04N	1/2" NPT (F)

04N

5. OTHER OPTIONS

TC	Material test certificate 3.1
TM	Material test certificate 2.2
TN	Tested to NACE standards
TO	Certification for Oxygen service
XM	Marking by engraving
XL	Marking by laser

XM

Ordering Example : A301-15-MF-R-04N-XM

NOTES:

- In case the flushing ring is required for D101, D102 or D201, please don't select the Flange Facing option.
- D101, D102 & D201 are integrated with diaphragm seals.