

Oil Level Gauge - OLG

It is an economical, rugged, compact and reliable gauge for visual indication of oil levels in small tanks.

Construction & Operation :

Consists of a toughened borosilicate gauge glass tube fitted between two metallic end blocks & banjo bolts through a set of 'O'rings. A guard is provided in the form a steel tube enclosing the glass gauge, to provide protection from accidental blows. The guard has two slotted windows for viewing of oil level. The gauge is mounted parallel to tank, so as to form a closed loop, causing tank liquid to seek its levels in the gauge.

Specifications :

End Blocks & Banjo Bolts	: CS (ZN Pltd), SS304/316, Monel
Process Conn	: M12 or M8, Banjo Bolts
Lock Nut	: CS (ZN Plated)
Guard	: CS (ZN Pltd) SS304/316, Monel Slotted Tube
Gauge	: Toughened B. Glass (HW) x X 16 OD
Packing	: Silicon
Banjo Bolt 'O'-rings	: Neoprene / Silicon
CC Distance (range)	: 75 to 300 mm
Visibility	: CC Dist (mm) Minus 40 mm
Temperature	: 70°C (Neoprene) or 150 °C (Silicon)
PR. Rating	: 1 Kg/cm2 (amb. temp)

Installation :

Side mounted through tank nozzles with matching process connections and ensuring that gauge is mounted parallel to the tank and nozzles CC dist corresponds to tank CC dist.

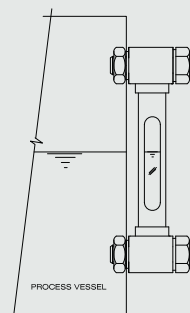


Fig. 2

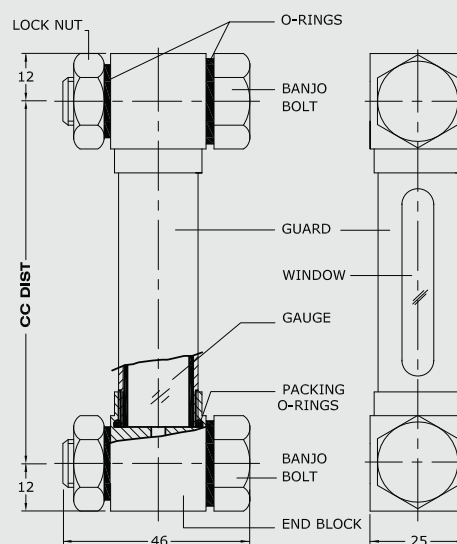
Ordering Information :

Model No. x CC Dist. (mm)



Construction :

Fig. 1



Model Identification :

OLG -		x CC dist	
MOC (End Block + Guard)		M	N
CS		S	E
SS304		O	
SS316			
Monel			
Others			
Process Connection		1	2
M12, banjo bolt		O	
M8 banjo bolt			
Others			
Packing		1	2
Neoprene		O	
Silicon			
Others			