

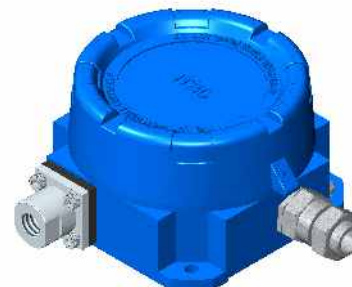
FEATURES

- Fix / adjustable differential
- Field adjustable set point
- Flameproof EEx IIA, IIB, IIC
- Ingress Protection IP 65
- Internal set point lock
- Rigid construction
- Scale provided

APPLICATION

- Marine applications
- Textile machineries
- Power & steel plants
- Furnace applications
- Oil & Gas, Refineries
- Petro-chemicals & Fertilizers
- Cement & Glass industries
- Railway engines & Turbines

High Accuracy & Repeatability



STANDARD SPECIFICATIONS

Repeatability	:	± 0.5 % F.S
Scale accuracy	:	± 1% F.S
Measurement unit	:	bar
Range	:	Refer "Range Table"
Range adjustment	:	External
Differential	:	Fixed (Standard), Adjustable (Optional)
Mounting	:	Bottom / Panel
Enclosure material	:	Aluminum pressure die cast
Sensing elements	:	SS 316 Diaphragm
Switch	:	1 SPDT Snap action micro switch
Switch rating	:	15A,250 VAC / 0.2A,24 VDC (Standard)
Process connection	:	¼"BSP(F)
Maximum process temperature	:	150 °C
Ambient temperature	:	-10...60 °C
Cable entry	:	½" NPT Double compression, in brass
Set point	:	Between 20 to 80 % F.S for better performance
High voltage strength	:	0.5 to 0.6 KV between open contacts and 2 K V between contact and body

RANGE TABLE

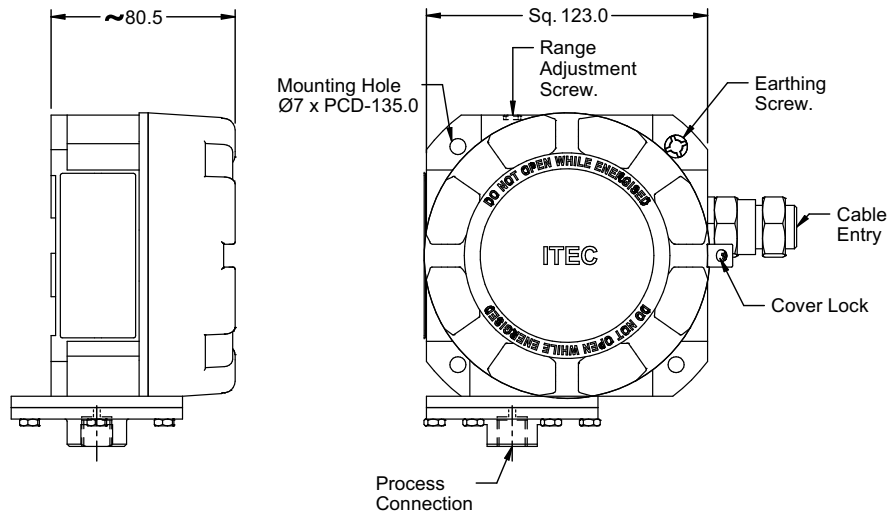
CODE	RANGE	CODE	RANGE
	"mbar"		"bar"
D53	-20...+20	B55	-1...0
D54	-40...+40	B40	-1...+2
D12	3...20	B42	-1...+4
D17	5...60	B04	0.2...2
D19	10...100	B06	0...4
D24	25...250	B07	0.6...6
D29	50...600	B09	1...10
		B11	1...16
		B13	2...25
		B15	2...32
		B16	4...40
		B17	5...60

APPROVALS



ATEX- PED

DIMENSIONAL DRAWING



All dimensions are in mm

MICROSWITCH SPECIFICATION

DESCRIPTION	RATING		DIFFERENTIAL	TYPE	SWITCH CODE	
	AC	DC			1 No.	2 Nos.
Low deadband / differential	15A/250V, 2A/24V 0.2A/220V	15A/250V, 2A/24V 0.2A/220V	Fix	SPDT	M10	M20
High dead band / differential	15A/250V, 6A/24V 0.25A/220V	15A/250V, 5A/24V 0.03A/220V	Fix / Adjustable	SPDT	M11	M21
Gold plated switch	1A/250V	0.5A/28V	Fix	SPDT	M13	M23
Environmentally sealed silver contact	5A/28V	-	Fix	SPDT	M14	M24
Hermetically sealed silver contact	3A/28V	2A/24V	Fix	SPDT	M16	M26
Hermetically sealed gold contact	1A/125V	-	Fix	SPDT	M17	M27
High DC rating	10A/125V	6A/125V	Fix / Adjustable	SPDT	M18	M28
DPDT	10A/125V, 0.2A/250V	-	Fix / Adjustable	DPDT	M08	-

ORDERING CODES

1. RANGE		B09	8. PROCESS CONNECTION		02B
Refer "Range Table"			02B	1/4" BSP (F) Standard	
2. CHAMBER MATERIAL		NF	12B	1/4" BSP (M)	
NF	AISI 316 SS		13B	3/8" BSP (M)	
NN	Monel K-500		14B	1/2" BSP (M)	
NO	Hastelloy C-276		02N	1/4" NPT (F)	
3. SENSING ELEMENT MATERIAL		DF	12N	1/4" NPT (M)	
DF	AISI 316 SS		14N	1/2" NPT (M)	
DN	Monel K-500		04N	1/2" NPT (F)	
DO	Hastelloy C-276		A25	1.5" RF 150#	
D2	PTFE (Teflon)		A26	1.5" RF 300#	
4. SWITCHING DIFFERENTIAL		S4	A27	1.5" RF 600#	
S4	Fixed, 2...5%		A31	2" RF 150#	
S5	Adjustable, 5...12.5%	S8	A32	2" RF 300#	
5. SET POINT			A33	2" RF 600#	
S8	On Raising		9. OTHER OPTIONS		
S9	On Falling	KK	TB	Calibration Certificate	
6. MICROSWITCH TYPE			XF	AISI 304 SS tag plate	
Refer "Microswitch Specification"			XV	Wall mounting bracket	
7. CABLE ENTRY			XS	Mounting bracket with 2" U-clamp	
C0	3/4" ET (F)		TC	Material test certificate 3.1	
C1	1/2" NPT (F)		KK	Cable gland, double compression flameproof, Ni-plated brass	
			KL	Cable gland, double compression flameproof, AISI 304 SS	

Ordering Example : S301-B09-NF-DF-S4-S8-M10-C1-02B-KK
COMPATIBLE ACCESSORIES

Diaphragm seal	Gauge cock	Needle Valves
Cooling tower	Snubber	Manifolds
Siphon		

NOTES:

1. Except "Standard" connection, other connections are given through adaptors.
2. The option "TC" covers only wetted parts.
3. Cable gland is available in other materials, contact factory.
4. Double Compression cable gland is a necessary option. Must to be chosen while ordering.