

FEATURES

- Van-stone design
- Single piece forged drilled
- Or single piece bar-stock drilled
- Flange RF connection

APPLICATION

- Oil & Gas applications
- Corrosive environments
- On-shore/Off-shore application

Forged / Bar-stock

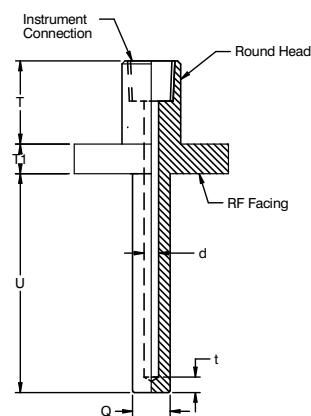


STANDARD SPECIFICATIONS

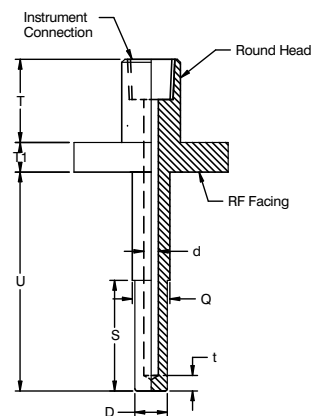
Shank form	:	Tapered
Material	:	AISI 316 SS
Instrument connection	:	1/2" NPT (F)
Bore diameter	:	6.6 mm
Lag extension	:	40 mm
Root diameter	:	30.0 mm
Tip diameter	:	14.0 mm
Immersion length	:	255 mm
Step / Taper Length	:	255 mm
Tip thickness	:	5 mm
Process connection	:	1.5" RF Diameter
Flange facing type	:	Raised face
Head type	:	Round
Head size	:	48 mm

DIMENSIONAL DRAWING

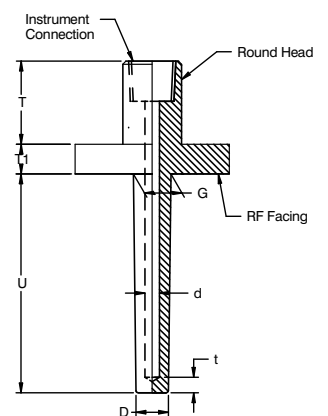
Straight Thermowell



Step Thermowell



Taper Thermowell



REFERENCE

ASME PTC 19.3TW:2010

Note :-
 T1=15mm
 Collar Thickness 20mm, >1.5" 1500 #

ORDERING CODES

1. SHANK FORM

S	Straight
E	Stepped
T	Tapered

2. MATERIAL

MB	Carbon Steel / ASTM A105		
MC	AISI 304SS	ME	AISI 310 SS
MF	AISI 316 SS	MG	AISI 316L SS
MM	Monel 400	MN	Monel K-500
MO	Hastelloy C-276	MQ	Inconel 600
MR	Inconel 625	MS	Inconel 800
MT	Inconel 825	MV	Titanium
MY	Alloy 20	M6	AISI 446 SS
MI	AISI 321 SS		

3. INSTRUMENT CONNECTION

02N	1/4" NPT (F)	04N	1/2" NPT (F)
05N	3/4" NPT (F)	06N	1" NPT (F)
02B	1/4" BSP (F)	04B	1/2" BSP (F)
05B	3/4" BSP (F)	06B	1" BSP (F)
04M	M20 x 1.5 mm (F)		

4. PROCESS CONNECTION / FACING SIZE

0	1" RF diameter as per AISI B16.5
1	1.5" RF diameter as per AISI B16.5
2	2" RF diameter as per AISI B16.5

5. RF FACING

J	Ring-Type Joint
R	Raised Face

6. HEAD TYPE

R	Round
----------	-------

7. HEAD SIZE

XX	27 mm (min.)
-----------	--------------

8. LAG EXTENSION ("T")

XXX	35 mm up to 250 mm
------------	--------------------

9. ROOT DIAMETER ("Q")

XX.X	Mention in 'mm'
-------------	-----------------

10. TIP DIAMETER ("D")

XX.X	Mention in 'mm'
-------------	-----------------

11. BORE DIAMETER ("d")

N	6.35 mm (1/4")	A	6.6 mm
C	9.0 mm	D	9.6 mm
O	10 mm	F	11 mm

12. IMMERSION LENGTH ("U")

XXXX	50 mm up to 1000 mm
-------------	---------------------

13. STEP STYLE

S	Straight
T	Taper

14. STEP / TAPER LENGTH ("S")

XXX	Mention in 'mm'
------------	-----------------

15. TIP THICKNESS ("t")

M	5 mm
N	6.35 mm (1/4")
O	10 mm

16. OTHER OPTIONS

XI	Plug & chain in SS
XK	Electro polishing
XL	Marking by laser
XM	Marking by engraving
TC	Material test certificate 3.1
TD	Dye penetration test
TG	IGC test
TH	Hydro test certificate
TI	IBR certification
TM	Material test certificate 2.2
TN	Tested to NACE standards
TO	Certification for Oxygen service
TP	Performance test certificate
TQ	Certification for Hydrogen service
TW	WFC as per PTC 19.3TW:2010
TR	Radiography for welding
TS	Radiography for bore concentricity
TU	Ultrasonic test

Ordering Example : W201-S-MB-02N-0-R-R-XX-XXX-XX.X-XX.X-A-XXXX-S-XXX-M-XM

NOTES:

1. Other diameters, connections are available, please contact factory for details.