

## FEATURES

- Partial bar-stock
- Flanged process connection

## APPLICATION

- Tanks & vessels

### Partial Bar-stock

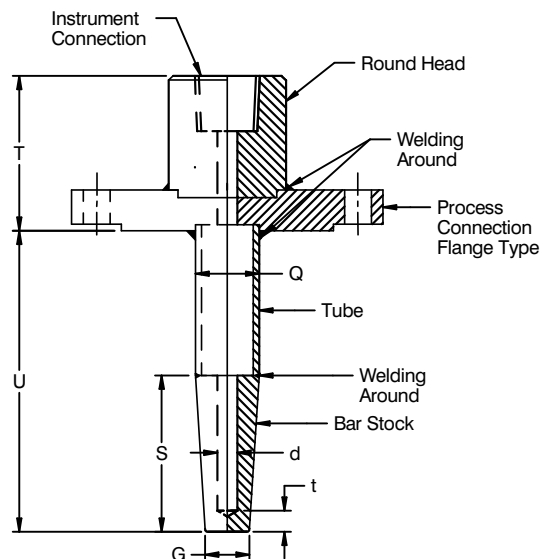


### STANDARD SPECIFICATIONS

Shank form	:	Straight
Flange material	:	AISI 316 SS
Well material	:	AISI 316 SS
Instrument connection	:	1/2" NPT (F)
Well Tubes	:	Pipe 1/2" Sch 40
Lag extension	:	50 mm
Immersion length	:	300 mm
Prop length	:	250 mm
Tail length	:	50 mm
Tip thickness	:	5 mm
Process connection	:	1" 150# as per ANSI B16.5
Flange facing type	:	Raised face
Head type	:	Round
Head size	:	27 mm

### DIMENSIONAL DRAWING

#### Step Thermowell



## REFERENCE

ASME PTC 19.3TW:2010

ORDERING CODES

1. SHANK FORM

S Straight      T Tapered

S

2. FLANGE MATERIAL

MB Carbon Steel / ASTM A105  
 MC AISI 304SS      ME AISI 310 SS  
 MF AISI 316 SS      MG AISI 316L SS  
 MI AISI 321 SS      MQ Inconel 600  
 MR Inconel 625      MO Hastelloy C-276  
 MN Monel-400      MM Monel K500

MB

3. WELL (PROP & TAIL) MATERIAL

MB Carbon Steel / ASTM A105  
 MC AISI 304SS      ME AISI 310 SS  
 MF AISI 316 SS      MG AISI 316L SS  
 MI AISI 321 SS      MQ Inconel 600  
 MR Inconel 625      MO Hastelloy C-276  
 MN Monel-400      MM Monel K500

MB

4. INSTRUMENT CONNECTION

02N 1/4" NPT (F)      04N 1/2" NPT (F)  
 05N 3/4" NPT (F)      06N 1" NPT (F)  
 02B 1/4" BSP (F)      04B 1/2" BSP (F)  
 05B 3/4" BSP (F)      06B 1" BSP (F)

02N

5. WELL PIPES

U3 Pipe 3/8" Sch 40      U4 Pipe 3/8" Sch 80  
 U5 Pipe 1/2" Sch 40      U6 Pipe 1/2" Sch 80  
 U7 Pipe 3/4" Sch 40      U8 Pipe 3/4" Sch 80  
 UA Pipe 1/4" Sch 40      UB Pipe 1/4" Sch 80  
 UC Pipe 1/2" Sch 160      UD Pipe 3/4" Sch 160

U3

5. WELL TUBES OR

U1 Tube Ø10 x 1.5 mm THK  
 UL Tube Ø12 x 2.5 mm THK  
 UM Tube Ø14 x 2.5 mm THK  
 UN Tube Ø12 x 1.0 mm THK  
 UO Tube Ø14 x 1.0 mm THK  
 UP Tube Ø16 x 2.0 mm THK

U1

6. LAG EXTENSION ("T")

XXX 35 mm up to 250 mm

XXX

7. IMMERSION LENGTH ("U")

XXXX 50 mm up to 1000 mm

XXXX

8. STEP STYLE

S Straight  
 T Taper

S

9. STEP / TAPER LENGTH ("S")

XXX Mention in 'mm'

XXX

10. STUB LENGTH ("X1")

XXXX 50 mm up to 1000 mm

XXXX

11. TAIL LENGTH ("X2")

XXXX 50 mm up to 1000 mm

XXXX

12. TIP THICKNESS ("t")

M 5 mm  
 N 6.35 mm (1/4")  
 O 10 mm

M

13. PROCESS CONNECTION

XXX Refer Flange Table for the codes

XXX

14. FLANGE FACING

F Flat Face  
 J Ring-Type Joint  
 R Raised Face

F

15. HEAD TYPE

R Round

R

16. HEAD SIZE

XX Mention in 'mm'

XX

17. OTHER OPTIONS

XI Plug & chain in SS  
 XL Marking by laser  
 XM Marking by engraving  
 TC Material test certificate 3.1  
 TD Dye penetration test  
 TH Hydro test certificate  
 TM Material test certificate 2.2  
 TO Certification for Oxygen service  
 TP Performance test certificate  
 TQ Certification for Hydrogen service

XM

Ordering Example : W204-S-MB-MB-02N-U3-U1-XXX-XXXX-XXXX-XXXX-M-XXX-F-R-XX-XM

NOTES:

1. Other connections are available through adaptors.